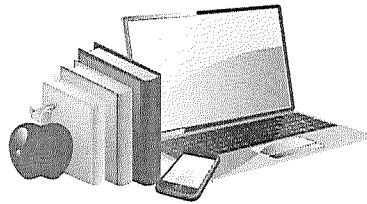


15783 18th Avenue
Lemoore, CA 93245
Telephone (559) 924-3405
Fax (559) 924-1153



Central Union School District
Lemoore, CA

Internet and Central-Net Usage Agreement

Internet is a world wide network connecting millions of computers and growing daily, and Central-Net is the Central Union Elementary School District's (CUESD) intra-district network. A network, which is really just many individual computers tied together, brings together information sources and allows communications with both local and distant computers. The Internet is a tool for life long learning, and we are pleased to offer it to our staff and students.

With this new learning tool, staff and students (collectively referred to as "users") must understand and practice proper and ethical use. All users must attend training regarding procedures, policy, and security before being allowed access to use the network.

Users must never allow others to use the network with their access codes. Users should protect their password to insure network security and their own ability to continue to use the network.

Users agree to abide by the rules of the district when using the network. This may include, but may not be limited to: signing a usage log before using the network, only accessing specific applications on the network, and being restricted from some applications on the network.

Although instructors will monitor internet use, parents must realize that students may encounter material while using the Internet that they might not consider appropriate or which might be considered offensive. It is the responsibility of both the parent and the student to choose not to pursue such material.

Users violating district rules, classroom rules or applicable state and federal laws are subject to loss of network privileges and disciplinary action. Students may be given a disciplinary action ranging from a failing class grade to expulsion from school.

Before using the CUESD network facilities, the user (staff member or student), and parent/guardian (of a student user) must sign below indicating that you are aware of and agree to follow the policies as described above and the Kings County Office of Education Acceptable Use Policy as described on the reverse.

Name of User (please print)

Signature of User

Date

KINGS COUNTY OFFICE OF EDUCATION ACCEPTABLE USE POLICY

1. Internet access is provided by Kings County Office of Education (KCOE). In order to utilize this service, users must agree and abide by this acceptable use policy. Our goal in providing this service is to promote educational excellence in the Kings County Schools by facilitating resource sharing, innovation and communication.
2. With access to computers and people from around the world also comes the availability to material that may not be considered to be of educational value. Families should be warned that some material obtained via the Internet may contain items that are illegal, defamatory, inaccurate, or potentially offensive. KCOE has taken precautions to restrict access to controversial information, either by accident or deliberately. However, the benefits to students from online access far outweigh the possibility that users may procure material that is not consistent with the educational goals of KCOE.
3. The purpose of this agreement is to ensure that use of Internet resources are consistent with the KCOE's stated mission, goals, and objectives. The smooth operation of the network relies upon the proper conduct of the users who must adhere to strict guidelines. These guidelines are provided here so that you are aware of the responsibilities you are about to acquire. If a KCOE user violates any of these provisions, his or her future access could be denied.
4. To gain access to the Internet, all students under the age of 18 must obtain parental permission and both parent/guardian and student must sign this document. The signatures at the end of this document legally bind and indicate the parties who signed have read the terms and conditions carefully and understand their significance.

Terms and Conditions:

- A. Rights and Responsibilities: Computers and networks can provide access to resources in and outside the county computer system, as well as the ability to communicate with other users worldwide. Such open access is a privilege and requires that individual users act responsibly.
- B. All existing laws (federal and state) and KCOE regulations and policies apply, including not only those laws and regulations that are specific to computers and networks, but also those that may apply generally to personal conduct.
- C. Users do not own accounts on KCOE computers, but are granted the privilege of exclusive use. All equipment loaned to users is their responsibility and if the user decides to cancel their service with KingsNet any electronic devices are to be returned. If not returned or damaged the user may be charged \$250.00 for the replacement of the equipment. Under the Electronic Communications Privacy Act of 1986 (Title 18 U.S.C. section 2510 et. seq.), users are entitled to privacy regarding information contained on these accounts. This act, however, allows system administrators or other KCOE employees to access user files in the normal course of their employment when necessary to protect the integrity of computer systems or the rights or property of the KCOE.

For example, system administrators may examine or make copies of files that are suspected of misuse or that have been corrupted or damaged. User files may be subject to search by law enforcement agencies under court order if such files contain information, which may be used as evidence in a court of law. In addition, student files on KCOE computer facilities are considered "educational records" under the Family Educational Rights and Privacy Act of 1974 (Title 20 U.S.C. section 1232(g)).
- D. Misuse of computing, networking or information resources may result in the loss of computing and/or network/Internet access. Additionally, misuse can be prosecuted under applicable statutes. Users may be held accountable for their conduct under any applicable KCOE procedure, or collective bargaining agreement. Illegal production of software and other intellectual property protected by U.S. copyright law is subject to civil damages and criminal punishment including fines and imprisonment.
- E. Other organizations operating computing and network facilities that are reachable via the KCOE network may have their own policies governing the use of those resources. When accessing remote resources from KCOE, users are responsible for obeying both the policies set forth in this document and the policies of the other organizations.
- F. Users of KCOE owned and operated information systems must respect the privacy of other users and the integrity of those systems; for example, users shall not seek information on, obtain copies of, or modify files, other data or passwords belonging to other users unless explicitly authorized to do so by those users. Nor shall they intentionally develop programs that harass other users. Nor shall they infiltrate a computer or information system and/or damage or maliciously alter the software components of a computer or information system.
- G. KCOE users must comply with copyright laws and license agreements.
- H. The following warning is in effect for all computer or information systems owned and operated by the Kings County Superintendent of Schools Office.

This Computing System is the property of the Kings County Superintendent of Schools Office. Any unauthorized access or use of this computing system is prohibited and could be subject to criminal and civil penalties. To help protect the system from unauthorized use and to assist in problem diagnosis and repair, activities on this system are monitored, recorded and subject to audit. Use of this system implies consent to such monitoring and recording.
- I. Anyone using the network consents to monitoring and is advised that, if the monitoring process reveals evidence of criminal activity, Kings County Schools might provide the content and transmission details to law enforcement and national defense agencies as appropriate. In the course of network maintenance or performance monitoring, the activities of individuals using the network may be monitored. Individuals found to be using the network in excess of their authority or contrary to this AUP are subject to having all of their activities on the network monitored and recorded to ensure subsequent compliance with policies and procedures.

Examples of Unacceptable Uses:

- i. Any illegal use of KCOE systems, or use in support of illegal activities is prohibited. Illegal use shall be defined as use that violates local, state and/or federal law. This includes, but is not limited to, the following: Stalking others, transmitting or originating any unlawful, fraudulent or defamatory communications, transmitting copyrighted material beyond the scope of fair use without permission of the copyright owner, or any communications where the message or its transmission of distribution, would constitute or would encourage conduct that is a criminal offense.
- ii. Activities that interfere with or disrupt network users, services, or equipment. Such interference or disruption includes, but is not limited to, distribution of unsolicited advertising or mass mailings, "spamming", propagation of computer worms or viruses; and using county systems to make or attempt to make unauthorized entry to other computational, informational or communications devices or resources. For the purpose of this AUP, "unsolicited advertising" includes any transmission that describes goods, products, or services, or by a third party retained by, affiliated with, or related to the vendor, providers, retailers, or manufacturer.
- iii. Use in furtherance of profit-making activities (consulting for pay, sales or distribution of commercial products or services for profit, etc.) or use by for-profit companies on school equipment, unless specifically authorized by Kings County Schools.
- iv. Use in support of partisan political activities.
- v. Use for private or personal activities that exceed Kings County Schools related research, instruction, or administrative applications, or when there is personal monetary gain.
- vi. Visiting pornographic, racist or otherwise objectionable Web sites.
- vii. Any other use that is unacceptable or not in keeping with role, mission or goals of this organization as determined by the leadership of the Kings County Office of Education.
- viii. KCOE makes no warranties of any kind, whether expressed or implied, for the service it is providing. KCOE assumes no responsibility or liability for any phone charges, line costs, usage fees, nor for any damages a user may suffer. This includes loss of data resulting from delays, nondeliveries, or service interruptions caused by its negligence or your errors or omissions. Use of any information obtained via the Internet is at your own risk. KCOE specifically denies any responsibility for the accuracy or quality of information obtained through its services.
- ix. Any violations may result in a loss of computer access, as well as other disciplinary or legal action. Users are considered subject to all local, state, and federal laws.
- x. KCOE makes no warranties of any kind, whether expressed or implied, for the service it is providing. The County Office assumes no responsibility or liability for any phone charges, line costs usage fees, nor for any damages a user may suffer. This includes loss of data resulting from delays, nondeliveries, or service interruptions caused by its negligence or your errors or omissions. Use of any information obtained via the Internet is at your own risk. The County Office specifically denies any responsibility for the accuracy or quality of information obtained through its services.